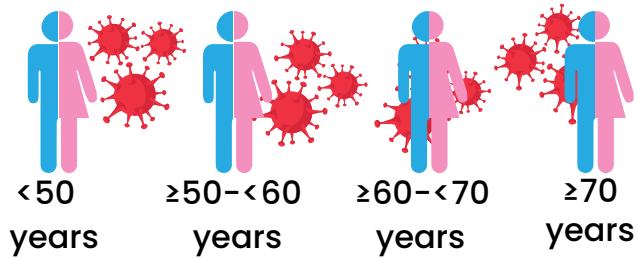


# GRAPHICAL ABSTRACT SAMPLE WORK

Age-related changes in plasma biomarkers and their association  
with mortality in COVID-19

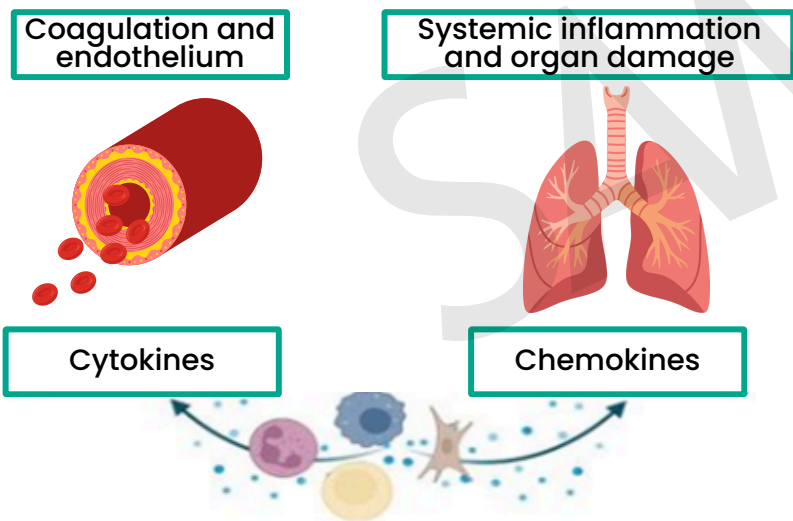
# Methods

464 COVID-19 patients admitted to the general ward stratified by age

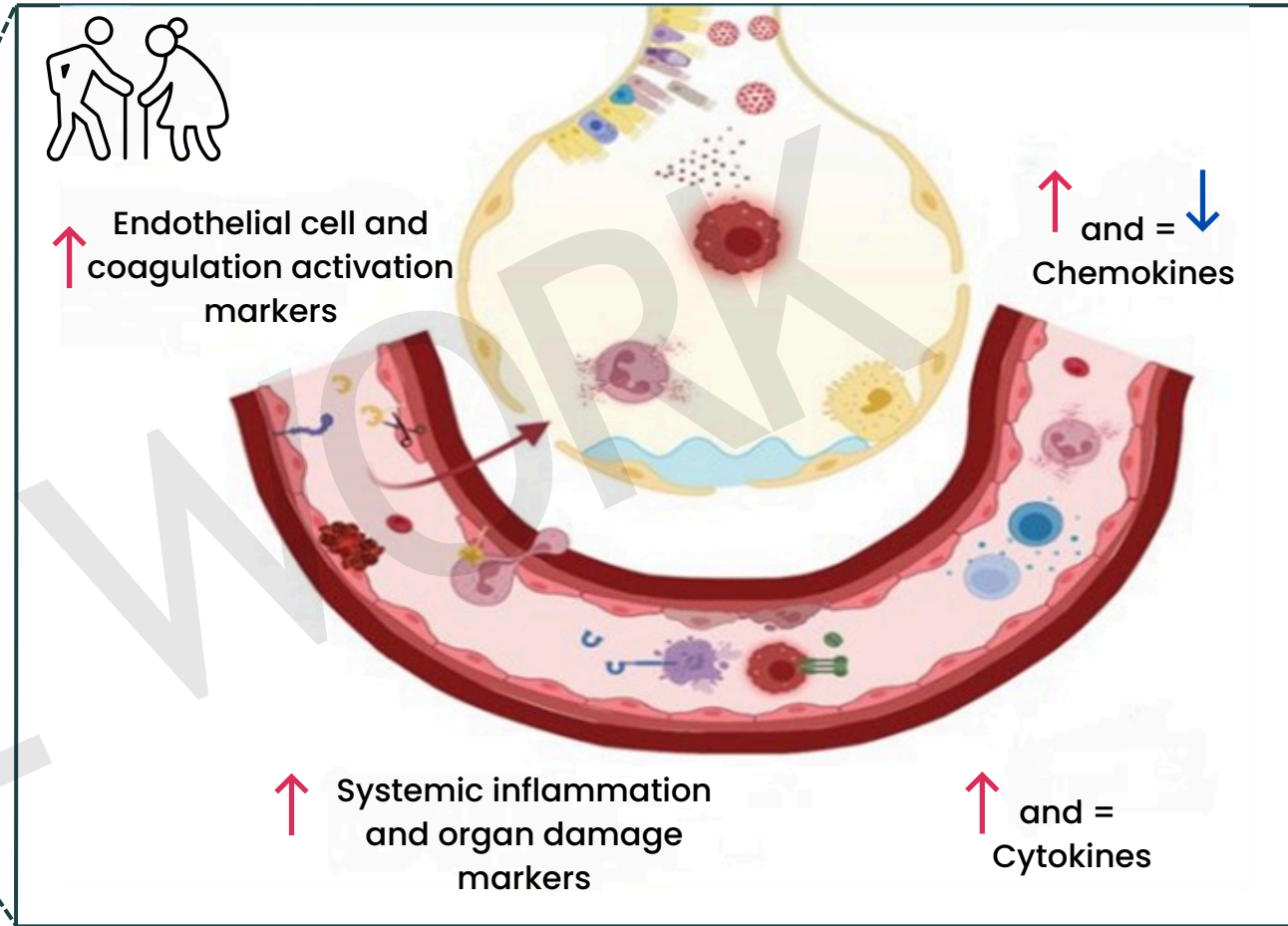
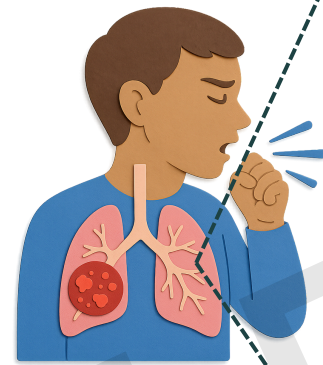


Validation in intensive care unit (n=157) and external (n=196) cohort

43 plasma biomarkers reflecting key pathophysiological domains



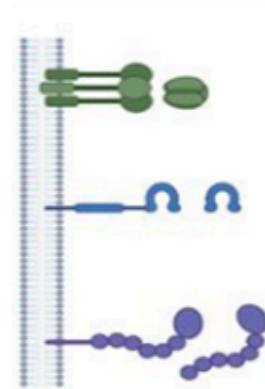
# Results



Mediation analysis



↑  
↑  
↑



Soluble TNF-R1  
Soluble TREM-1  
Soluble thrombomodulin

