

# PRISMA 2020 FLOW DIAGRAM

## DISCLAIMER :

This diagram is meant only for academic reference purpose only. We acknowledge the author and the publisher



[pubrica.com](http://pubrica.com)

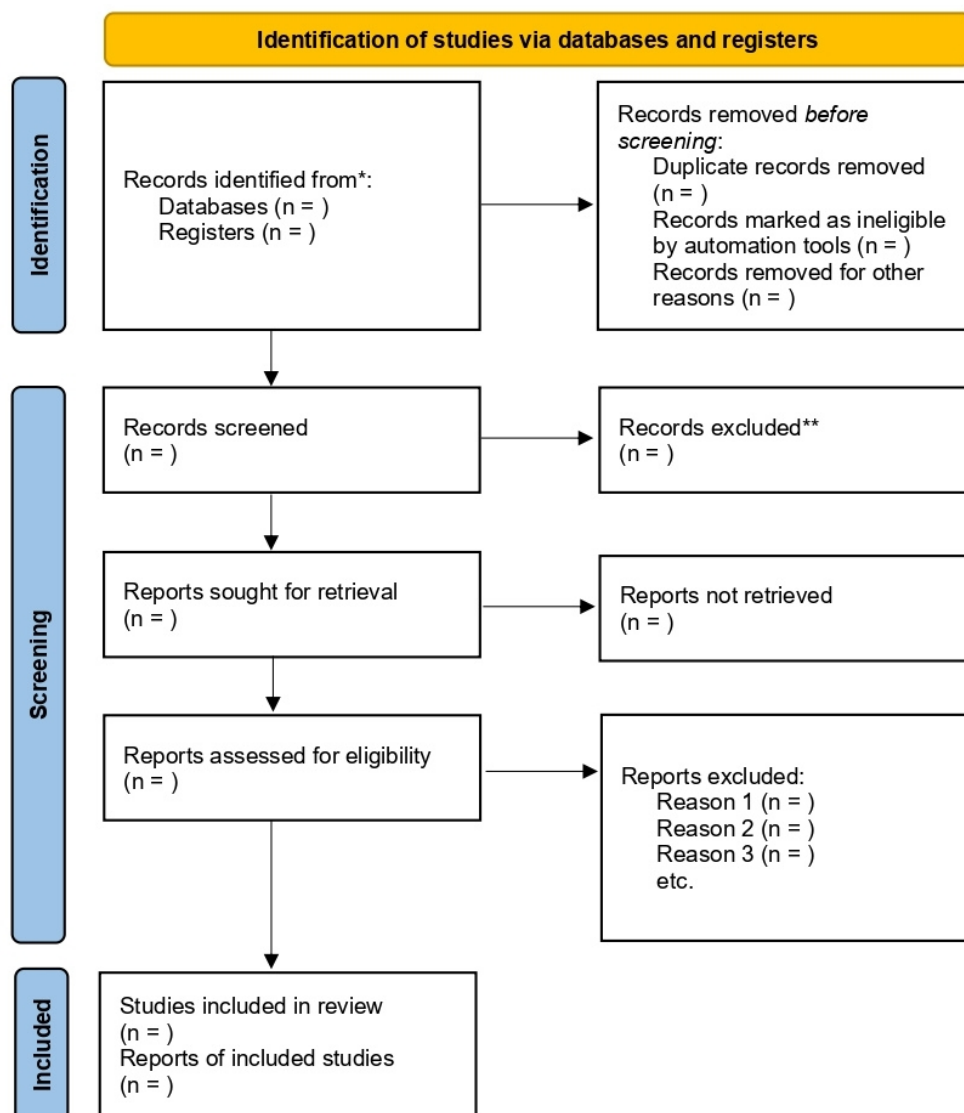


(UK) +44 161 394 0786  
(IN) +91 98843 50006



[sales@pubrica.com](mailto:sales@pubrica.com)

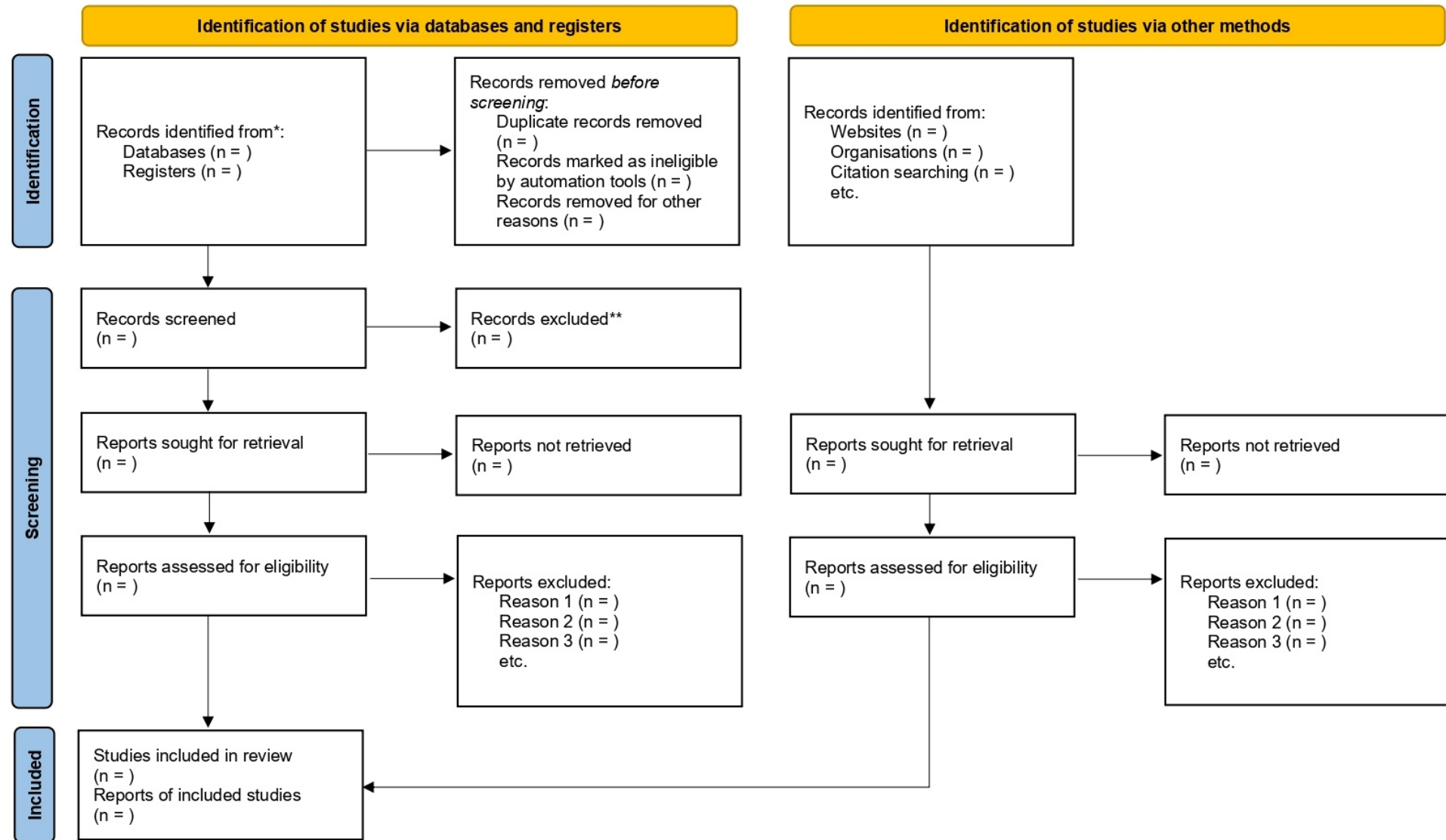
## PRISMA 2020 flow diagram for new systematic reviews, which included searches of databases and registers only



\*Consider, if feasible to do so, reporting the number of records identified from each database or register searched (rather than the total number across all databases/registers).

\*\*If automation tools were used, indicate how many records were excluded by a human and how many were excluded by automation tools.

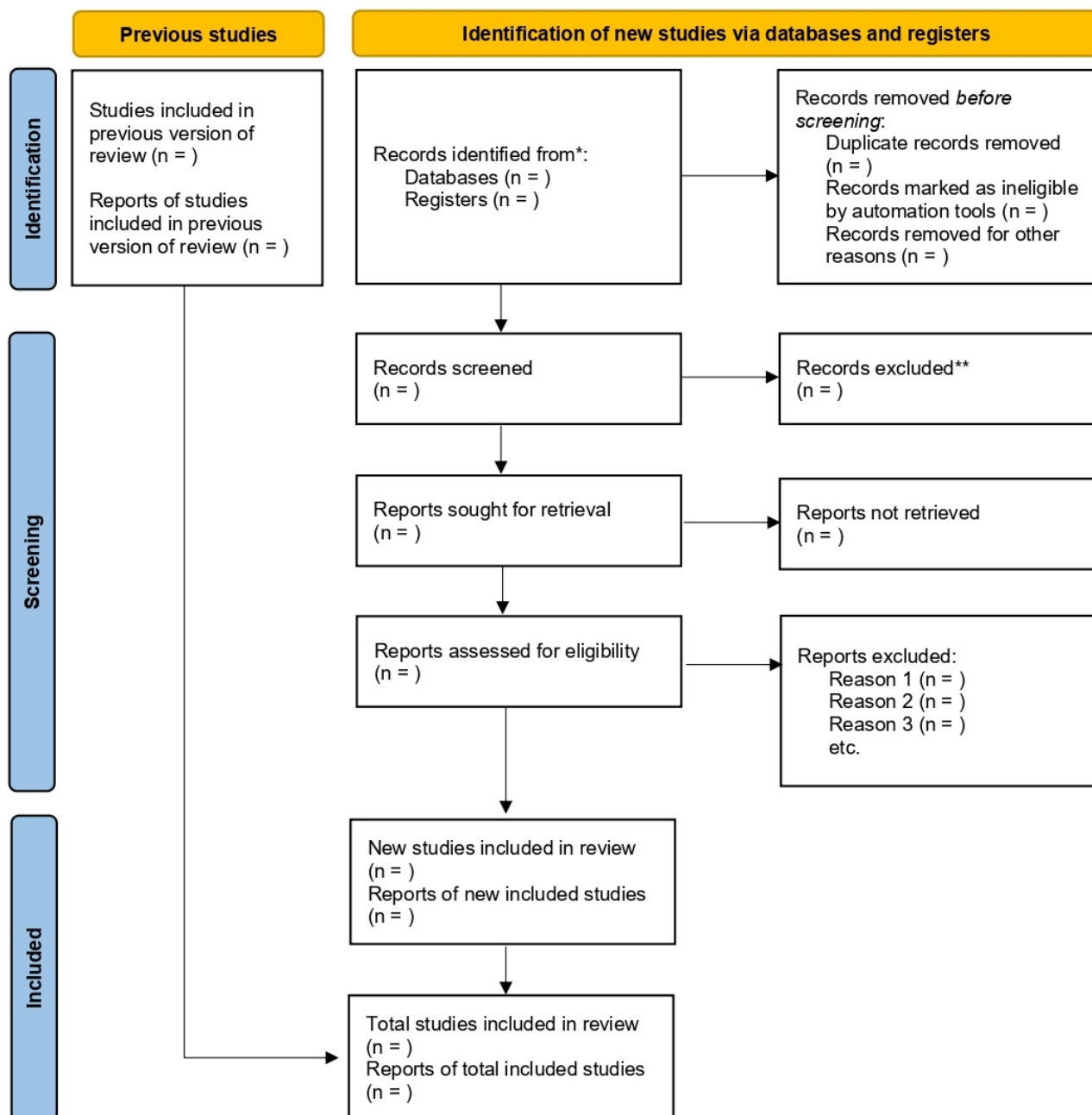
**PRISMA 2020 flow diagram for new systematic reviews, which included searches of databases, registers, and other sources**



\*Consider, if feasible to do so, reporting the number of records identified from each database or register searched (rather than the total number across all databases/registers).

\*\*If automation tools were used, indicate how many records were excluded by a human and how many were excluded by automation tools.

## PRISMA 2020 flow diagram for updated systematic reviews, which included searches of databases and registers only



\*Consider, if feasible to do so, reporting the number of records identified from each database or register searched (rather than the total number across all databases/register).

\*\*If automation tools were used, indicate how many records were excluded by a human and how many were excluded by automation tools.

Source: Page MJ, et al. BMJ 2021;372:n71. doi: 10.1136/bmj.n71.

This work is licensed under CC BY 4.0. To view a copy of this license, visit <https://creativecommons.org/licenses/by/4.0/>

**PRISMA 2020 flow diagram for updated systematic reviews, which included searches of databases, registers, and other sources**

